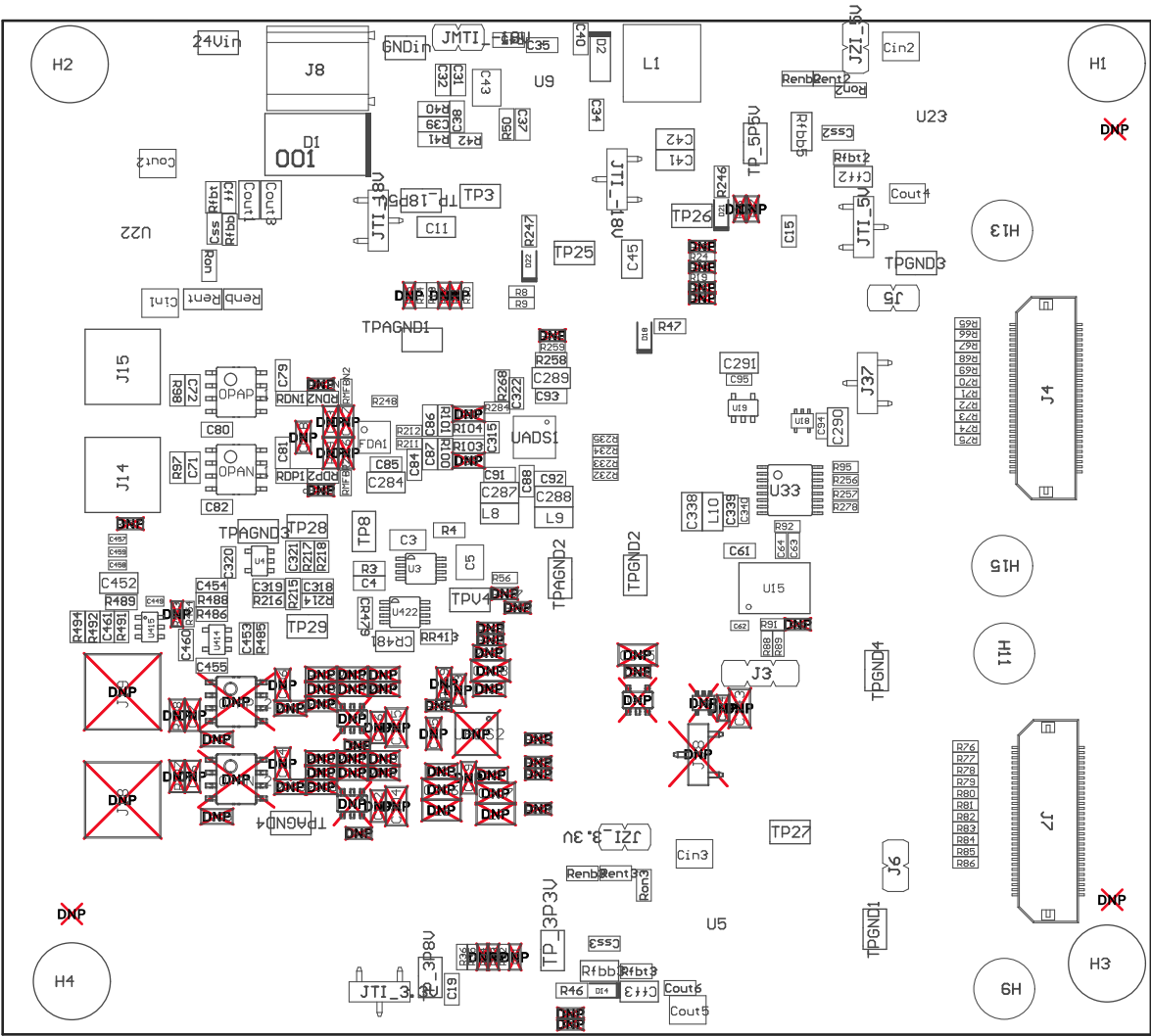
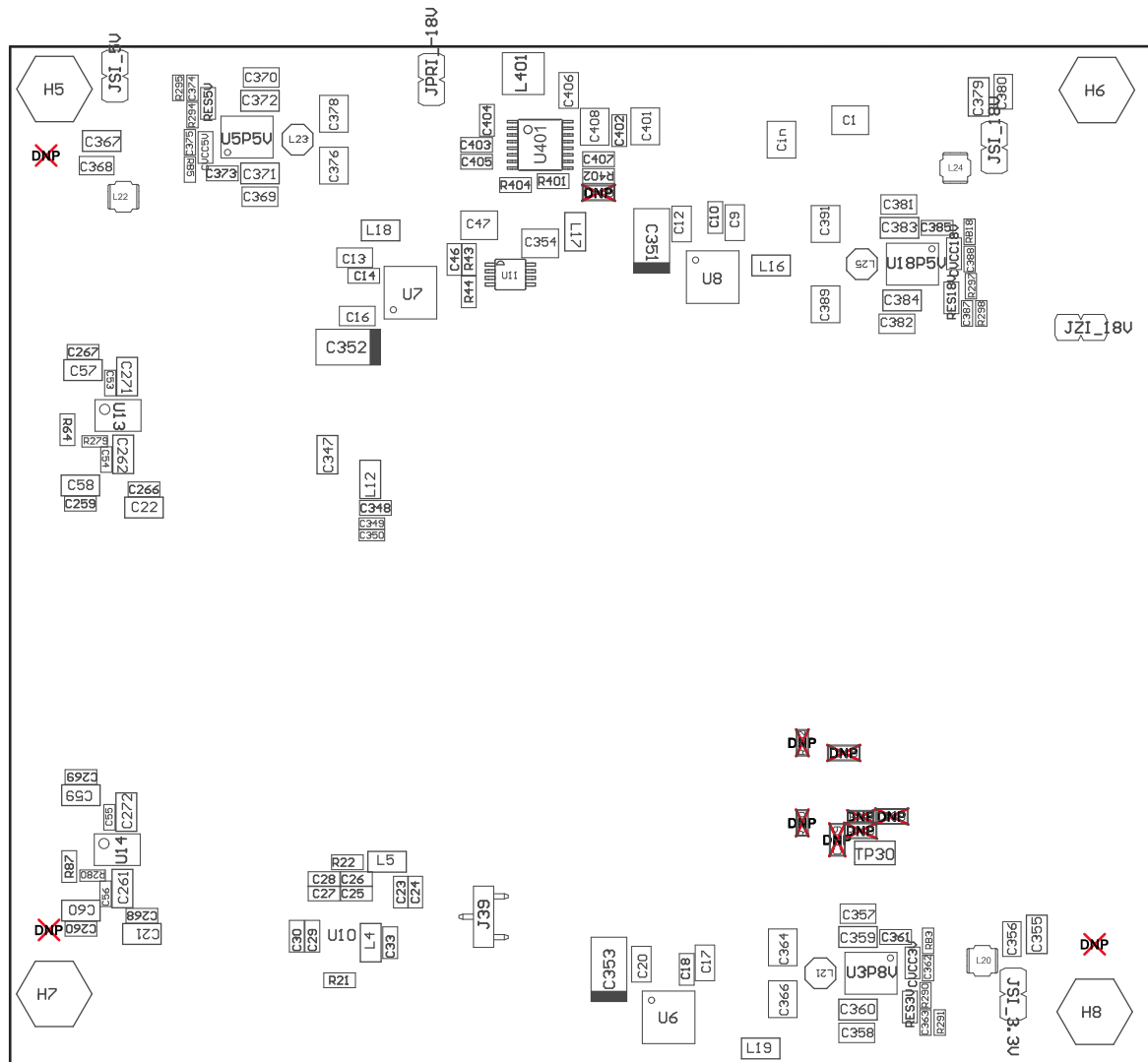


Z22 ■ These assemblies are ESD sensitive, ESD precautions shall be observed.  
Z23 ■ These assemblies must be clean and free from flux and all contaminants. Use of no clean flux is not acceptable.  
Z24 ■ These assemblies must comply with workmanship standards IPC-A-610 Class 2, unless otherwise specified.





COMPONENTS MARKED 'DNP' SHOULD NOT BE POPULATED.  
ASSEMBLY VARIANT: 001

PCB VIEWED FROM BOTTOM SIDE	BOARD #: TIDA-01057	REV: E1	SUN REV: Not In VersionControl
	TID #: 01057		
PLOT NAME = Bottom Assembly Drawing	GENERATED : 2017/12/14 17:51:24		TEXAS INSTRUMENTS